

IsoTek®



Striving for excellence through science,
innovation and sound engineering...

IsoTek® was formed in July 2001 with the vision to create high-quality mains power conditioners that stretched beyond current conventions. Through careful market analysis and extensive research, IsoTek® has been able to launch products that dramatically improve the performance of all components used within an audio or visual environment. As a result of this success, power conditioning is now recognised as an integral part of any hi-fi or home theatre system, be it modest or high-end. IsoTek® products are proven to lead the way in power management systems throughout the world, in both domestic and professional markets. The latest EVO3 range further galvanises a commitment to pursue excellence at every level.

IsoTek® believes that all hi-fi and home theatre components benefit from their own clean power supply. This has led to the concept of using individual filters for every component, with each designed specifically for the purpose in hand. This dramatically reduces cross-contamination between components plugged into the filter and improves performance significantly. Every part used in an IsoTek® design is of the highest quality and is extensively tested for reliability and purpose. The circuit designs are then 'field' tested before they reach the market, in order to ensure the widest possible compatibility with third party products.

The IsoTek® product range has been developed to offer music and film lovers huge improvements in sound or picture quality at a given price point. Great care and attention is given to finding a balance between technology, price and performance, where the sum is always greater than the combination of parts. This remains a continual challenge.

Installing an IsoTek® unit will significantly improve the performance of your entire audio or home theatre system. The noise floor will drop and subtle sonic details will become more evident, with greater articulation of low frequency information. Increases in atmosphere and a general sense of realism will be achieved. Home theatre owners will notice improved image quality with a greater differentiation between tonal values. Black hues will be richer with subtle intonation, skin tone inflections will be far more natural and the overall presentation will have a palpable realism.

IsoTek® strives to offer exceptional performance and value for money, with all products designed in the UK to the highest possible standards. Reliability and aesthetics also play a critical role in sustaining IsoTek's® high-quality reputation, with customer service that is second to none. Our ongoing quest is to achieve excellence at every stage, meeting each challenge with science, innovation and sound engineering – that is the IsoTek® way.

Why Power?

In the world of hi-fi and home theatre, it is universally accepted that signal purity must be maintained from format source to final presentation. In other words, 'rubbish in, rubbish out'. It is not possible to correct losses or corruptions to an audio signal down the chain of components, therefore it is advocated that all source components – for example, a CD player, turntable, DVD or Blu-ray player – must be of the highest of standard. Even the interconnecting cable at this stage should be of the highest quality, so as not to lose those precious signals.

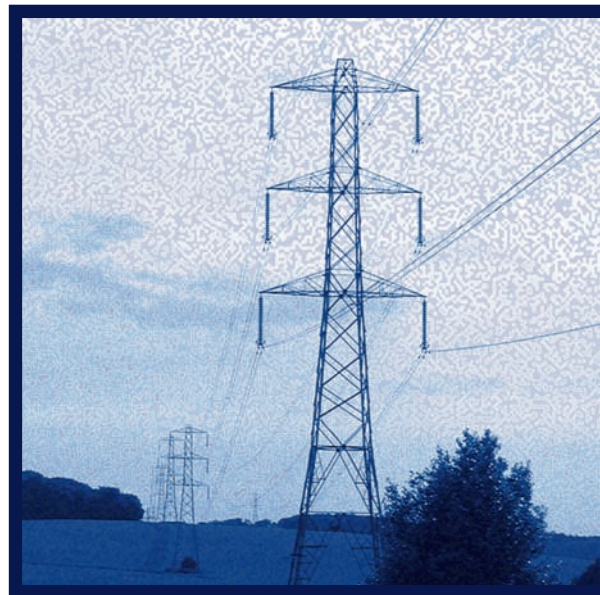
These are principles upon which manufacturers have based their business strategies – proven principles that form the bedrock of high-end audio. It is, however, important to step another stage back, beyond the primary source; a stage that not only governs your source components but also dramatically affects every other stage of your hi-fi or home theatre system. It is a factor that is often overlooked until a system is complete, regarded as an 'add-on' once everything else is in place. It is, however, a critical factor in every system's performance, affecting all components in the chain. What's more, without proper provision you will never hear or see the true potential of your system.

The best CD player in the world will not work at all without power, but the purity of that power will have a dramatic effect on its performance, as well as on the signal that high-quality audio endeavours to preserve throughout the entire audio chain.

From the moment power is generated, it is exposed to many polluting factors. The miles of cables that power travels along are bathed in a sea of Electromagnetic Interference (EMI) and Radio Frequency Interference (RFI). These factors are set to become worse as our global communications networks expand. These issues are then added to by an over stretched power network that is put under increasing strain by rising demand, so that maintaining a tightly regulated supply becomes almost impossible. These issues are compounded by the fact that as equipment draws power, the mains sign wave becomes corrupted – even your own audio or AV equipment contributes to this.

If you accept the first principle of audio – to place emphasis on the quality of source components – then accept also that the power delivered to your components is fundamental.

Start at the true beginning, the power supply. Remember: ‘rubbish in, rubbish out’.



Why IsoTek?

Maintaining a healthy environment for your audio or home theatre system is essential. IsoTek® products guarantee to provide each component in your audio or home theatre system with a pure power supply, ensuring that you achieve the best possible performance. Whether your budget is large or small, at each given price point there is an ideal IsoTek® power conditioner to suit your needs. The quality of IsoTek® products is endorsed by numerous magazine reviews and awards, not only in the UK but also throughout Europe, America and the Far East.

The ownership of an IsoTek® product ensures the very latest technological breakthroughs. Innovative proprietary technologies like Polaris-X©, which acts as a non-release pressure valve for mains noise, thereby dramatically reducing component cross-contamination, feature in every IsoTek® design. Other IsoTek® innovations like Direct Coupled Design©, Adaptive Gating©, Inductive Resistance Gate©, K.E.R.P.© and Triple Resonant System© ensure class-leading performance. These advanced features are unique to IsoTek® power conditioners.

All IsoTek® products are professionally designed, manufactured and hand-built using the finest audiophile-grade components in the UK. These exacting standards ensure ultimate performance and reliability. Our standard customer guarantee scheme also offers a lifetime of service and dependability.



"IsoTek is the leader in mains conditioning products"

HI-FI NEWS

"IsoTek is the UK's biggest name in mains filtration"

HI-FI CHOICE

"A revelation"

WHAT HI-FI? SOUND & VISION

"Not all mains conditioners are created equal... IsoTek has built itself a reputation as a purveyor of mains conditioners that actually improve (as opposed to just alter) the sound"

HI-FI WORLD



2007 Hi-Fi Choice
Category Winner
IsoTek Sigmas



2007 Sound & Vision
Category Winner
Hungary
IsoTek Gil Mini Sub



2008 Hi-Fi Choice
Best Buy
IsoTek Sirius



2008 Hi-Fi Choice
Silver Category Award
IsoTek Sirius



2010 Hi-Fi World
IsoTek Aquarius



2006 What Hi-Fi?
IsoTek Full System
Enhancer CD



2006 T.A.S.
Editors Choice
Nordost Thor by IsoTek



2006 Hi-Fi News
Category Winner
IsoTek Sigmas



2006 Hi-Fi News
Product of the Year
IsoTek Sigmas



2006 Hi-Fi Choice
Category Winner
IsoTek Sigmas



2005 What Hi-Fi?
IsoTek Gemini-6-Way



2005 Hi-Fi Choice
Editors Choice
Nordost Thor by IsoTek



2005 What Hi-Fi?
IsoTek Titan



2005 Hi-Fi News
Category Winner
IsoTek Titan



2005 What Hi-Fi?
Product of the Year
Hong Kong
IsoTek Titan



2003 Hi-Fi News
Category Winner
IsoTek Mini Sub [Mk1]



2004 What Hi-Fi?
IsoTek Gil Vision



2004 Hi-Fi Choice
Category Winner
IsoTek Gil Mini Sub



2004 What Hi-Fi?
Category Winner
IsoTek Gil Vision



2004 Hi-Fi Plus
Category Winner
Nordost Thor by IsoTek



2002 Hi-Fi News
Category Winner
IsoTek SubStation



2003 What Hi-Fi?
IsoTek Mini Sub [Mk1]



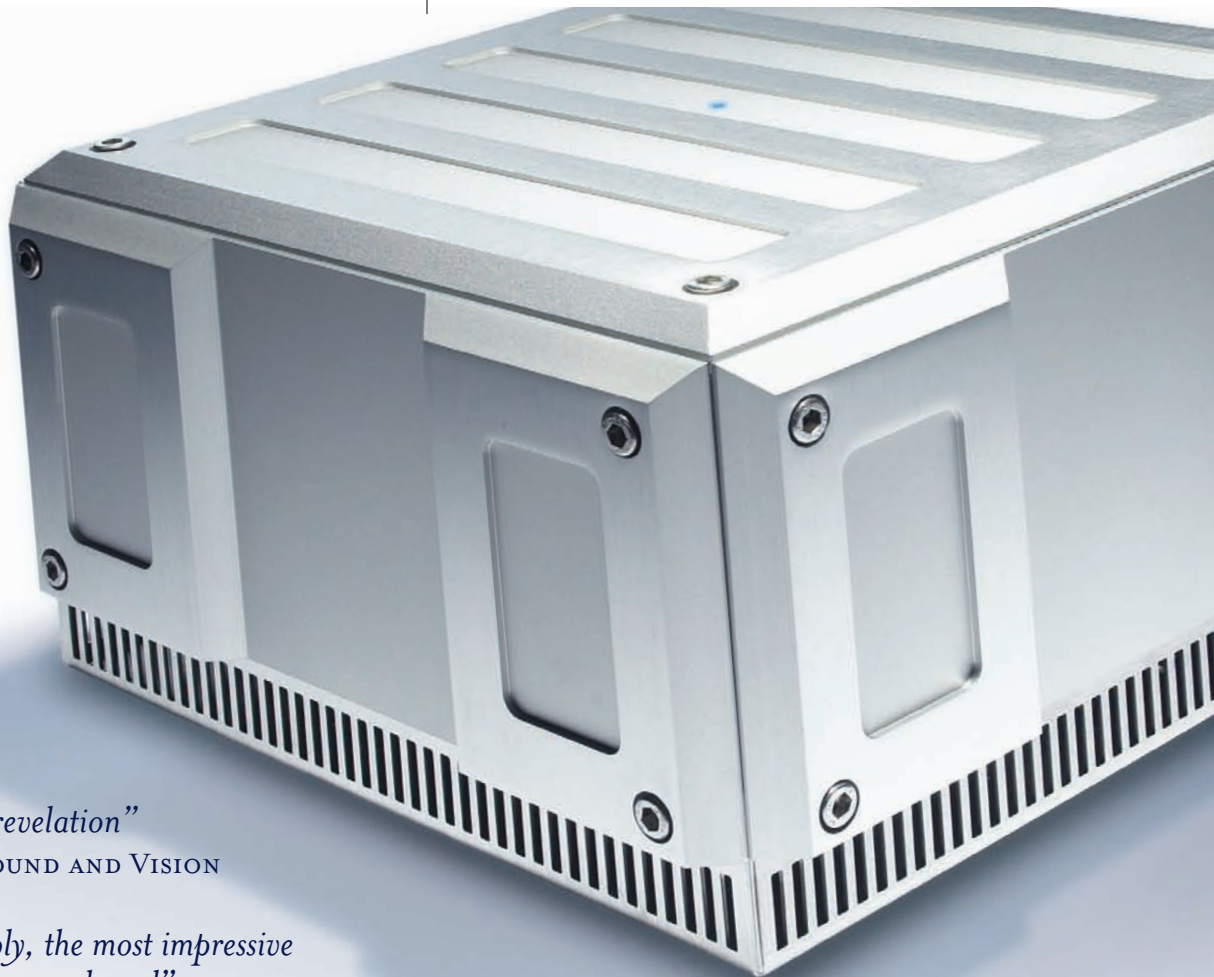
2003 Hi-Fi Choice
Editors Choice
IsoTek Mini Sub [Mk1]



2003 What Hi-Fi?
Category Winner
IsoTek Mini Sub [Mk1]



2003 Hi-Fi Choice
Category Winner
IsoTek Mini Sub [Mk1]



"The Titan is a revelation"

WHAT HI-FI? SOUND AND VISION

*"It is, quite simply, the most impressive
mains filter we've ever heard"*

HI-FI NEWS

Titan

Designed to deliver the ultimate IsoTek® power conditioning experience, the Titan has been optimised for use with power amplifiers. The compact design features two high-quality unswitched sockets at the rear and a further Neutrik connector for a distribution system called Multi-Link, giving six additional sockets. Ideal for surround sound systems in need of more high current outlets.

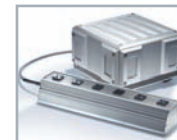
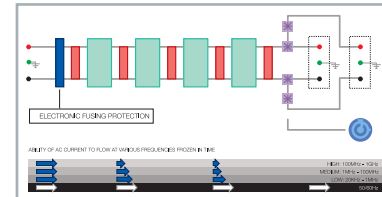
Titan uses newly developed, nine-stage, direct-coupled technology for optimum high-current filtering. This radical circuit has been optimised for a high degree of common-mode rejection, with the highest possible differential-mode rejection compatible with massively low insertion losses. Great care has been taken to minimise insertion loss at mains frequency. The new circuit also offers the desirable characteristics of a truly balanced supply, especially at high frequencies where it delivers superior performance compared to its isolation-transformer-based predecessor.

To further ensure the greatest possible transient response, sufficient to realise an unlimited peak current draw (23,000 watts potential), two things out of the ordinary have been achieved. Firstly, the minimum constant running ability of the device is rated at over 4,600 watts. Secondly, the unit is fitted with an RCBO. This hi-tech electronic fusing unit offers huge transient overloads whilst remaining safe.

Specifications

Number of outlets: 2 + Multi-Link
 Type of outlets: UK, EU, US
 Mains inlet: Neutrik
 Mains voltage: 100-240VAC/50-60Hz
 Maximum current: . . . 16Amps continuous
 Total power: (nominal 230V) 3680W
 (Circuit/Transient) 4600W/Unlimited
 Dimensions: .275x182.5x275mm (WxHxD)
 Weight: 12.75 Kg

- Unlimited transient ability
- Suitable for all audio or AV components
- Compact yet elegant design
- Expand outlets via Multi-Link strip
- High quality resonance deadening compound (RDC) feet
- UK, EU and US specifications available





*"Sound quality is certainly cleaner and less coloured,
with significantly lower background 'hash'"*

HI-FI CHOICE

Nova

Like Titan, the IsoTek® Nova has been designed to deliver the ultimate in mains conditioning, this time for use with front-end source components. The rack-width unit features six high-quality unswitched sockets at the rear.

Nova sports an optimised, direct-coupled, six-stage primary and five-stage secondary filter circuit, with each outlet individually filtered. This complex circuit also includes unique Adaptive Gating®. The Gating® principle was first introduced by IsoTek® in the multi-award-winning Gil Mini Sub to provide an ideal operational environment for the circuits responsible for eliminating product cross-contamination. Adaptive Gating® allows Nova to auto-sense and then adjust the level of filtering required dependent upon the nature of equipment connected. For example, a plasma screen will have different requirements compared to a DVD player, both in terms of filtering and power draw. Nova will adapt

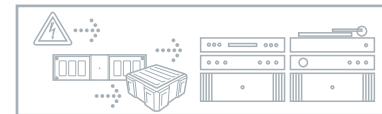
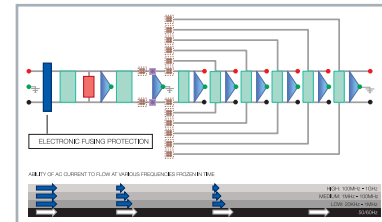
automatically to ensure the optimum level of filtering and current is available to deliver peak performance.

The electronic protection circuit ensures the utmost safety whilst eliminating fuse contacts. The circuit coupled with adaptive principles allows a total power draw of up to and including 3680 watts. For many situations Nova represents the ultimate front-end solution.

Specifications

Number of outlets: 6
 Type of outlets: UK, EU, US
 Mains inlet: Neutrik
 Mains voltage: 100-240VAC/50-60Hz
 Maximum current: 16Amps continuous
 Total power: (nominal 230V) . . . 3680 Watts
 Dimensions: . . . 435x135x355mm (WxHxD)
 Weight: 20.00 Kg

- Auto sensing adaptive circuit
- Suitable for all source components
- Elegant rack width design
- Six individually filtered adaptive outlets
- 'Soft' start, ideal for AV installations
- High quality resonance deadening compound (RDC) feet
- UK, EU and US specifications available





"There's nothing to touch it"

HI-FI CHOICE

*"Excellent build quality, protection circuits and
stunning performance... a true bargain"*

HI-FI NEWS

Sigmas

The Sigmas takes many of the technological breakthroughs resulting from the Titan/Nova development projects and places them in a more affordable, yet still highly effective package. It bridges the gap between the new Aquarius and the Nova, incorporating many of the desirable aspects of the high-end Nova and Titan designs into a single chassis.

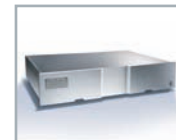
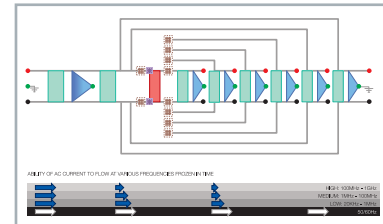
Through extensive design and an inspired balance of internal components, Sigmas endeavours to challenge the astonishing performance levels of the Titan and Nova. Like the Aquarius, Sigmas offers two high-current outlets and a further four medium-current connections for source components. However, Sigmas delivers an amalgam of top-end IsoTek® technologies, borrowing the Direct Coupled Design© and high-current aspects of the Titan, as well as Adaptive Gating© from the Nova. For the aspiring high-end audiophile, Sigmas is a perfect solution delivering

performance and versatility that's unrivalled at the price. However, for those who crave the ultimate performance, the Nova and Titan combination still reigns supreme.

Specifications

Number of outlets: 6
 Type of outlets: UK, EU, US
 Mains inlet: 16Amp IEC (C20)
 Mains voltage: 100-240VAC/50-60Hz
 High current: 16Amps
 Medium current: 6Amps
 Maximum current: . . . 16Amps continuous
 Total available power: (230V) 3680W
 High: (Circuit/Transient) . . 4600W/Unlimited
 Medium: (Circuit) 1380W
 Dimensions: . . . 444x85x305mm (WxHxD)
 Weight: 9.75 Kg

- Unlimited high current transient ability through the two dedicated high current outlets (16Amps)
- Suitable for all audio or AV components
- Compact yet elegant design
- Full system compatibility
- UK, EU and US specifications available



"The whole auditioning process took about 30 seconds. Play a piece of music on GII Mini Sub. Play it again on Aquarius and wonder why you were so attached to the GII Mini Sub... Very highly recommended"

HI-FI+



"An effective improvement to a good hi-fi system... That the IsoTek Aquarius revealed previously unheard details from my familiar LPs, says it all"

HI-FI WORLD

"The lift in performance is quite remarkable"

HI-FI CHOICE

Aquarius

IsoTek's® legendary, multi-award-winning Mini Sub has set the standard for power conditioning components since the original was launched in 2002. Now, in 2009, a new benchmark conditioner has arrived: the IsoTek® Aquarius.

Aquarius succeeds the GII Mini Sub in IsoTek's® range, incorporating the very latest innovations to deliver an exceptional performance, with an exceptionally attractive price tag. It improves upon the GII Mini Sub's current delivery, with a full 16 amps to its two high-current outlets, allowing for unlimited transients thanks to its thermo-magnetic fusing and 16A IEC C20 connector. The four medium-current outlets are now fused using a high-quality, user-replaceable bayonet fuse holder. Aquarius also delivers greater instantaneous protection (67,500 amps), and greatly improved independent filter stages throughout.

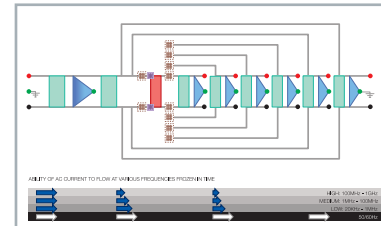
In addition, Aquarius is the most affordable power conditioner to feature IsoTek's® Adaptive Gating® technology, originally

introduced in the high-end Nova before trickling down to the Sigmas, and now Aquarius. This proprietary technology allows Aquarius to auto-sense the load of each component connected to it, thus tailoring the filtering process to suit the component. It all adds up to a power conditioner with a performance that is unprecedented at its price point.

Specifications

Number of outlets: 6
 Type of outlets: UK, EU, US
 Mains inlet: 16Amp IEC (C20)
 Mains voltage: 100-240VAC/50-60Hz
 High current: 16Amps
 Medium current: 6Amps
 Maximum current: . . . 16Amps continuous
 Total available power: (230V) 3680W
 High: (Circuit/Transient) . . 4600W/Unlimited
 Medium: (Circuit) 1380W
 Dimensions: 444x85x305mm (WxHxD)
 Weight: 9.00Kg

- Unlimited high current transient ability through the two dedicated high current outlets (16Amps)
- Suitable for all audio or AV components
- Auto sensing Adaptive Gating technology 67,500Amps of instantaneous protection
- UK, EU and US specifications available





*"The difference is immediate and clear...
This IsoTek is one of the most cost-effective home
cinema and hi-fi upgrades there is"*

WHAT HI-FI? SOUND AND VISION

Vision

Building upon the original, multi-award-winning GII Mini Sub, the Vision adds further precision filtering with extended bandwidth that greatly enhances the performance of video components, in addition to audio.

The Vision has been designed as a complete power conditioning solution for home theatre systems, offering simple plug-n-play installation from a rack-width unit that is compliant with all standard audio racking systems. At the rear of the unit are six high-quality unswitched outlets – two high-current outlets for power amplifiers, plus four medium-current outlets featuring an extra level of filtering for source components, screens and projectors.

Each outlet is individually filtered to not only protect audio and video components from mains noise and dangerous power surges, but also more importantly eliminate product cross-contamination, an issue overlooked by most mains filter manufacturers. The two

specific high-current outlets feature sophisticated shunt filtering to allow high current without dynamic restriction. The four remaining outlets feature a combination of shunt, series, delta and protection filtering, with Gating© and our proprietary Polaris-X© technology helping to ensure that this is a highly effective unit.

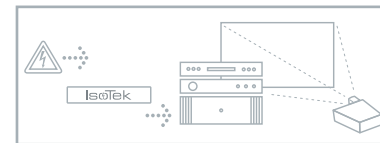
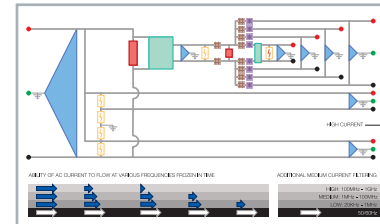
Specifications

Number of outlets: 6
 Type of outlets: UK, EU, US
 Standard mains inlet: IEC fused

Mains voltage: 100-240VAC/50-60Hz
 Maximum current: (1 & 2) 10Amps
 Maximum current: (3 to 6)5Amps
 Total maximum current: 10Amps
 External mains fuse: .5Amps (13Amps UK)

Dimensions: 444x85x305mm (WxHxD)
 Weight: 7.0Kg

- Easy 'plug-n-play' set-up
- Suitable for all complete systems
- Component from component isolation
- 6 individually filtered outlets
- Elegant rack width chassis
- Multi award winning design
- UK, EU and US specifications available





Solus

The Solus is the entry point for IsoTek® rack-width power filters. Although offering brilliantly simple plug-n-play installation for a complete system solution, its refined internal design forms the foundation for the rest of the range. The rack-width unit is compliant with all standard audio racking systems, with six high-quality unswitched outlets at the rear.

Solus features a sophisticated delta filter network coupled with proprietary Polaris-X© technology, which is based upon Kirchhoff's two current laws. Polaris-X© causes electrons to take the easiest route without the hazard of mains noise back-flow, thus ensuring that components connected to the unit do not cross contaminate.

Solus has extremely low insertion loss and can therefore be used with all kinds of

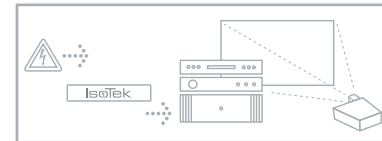
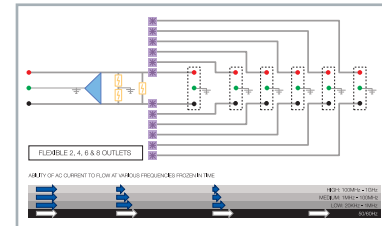
equipment, from power amps to source components. This compact yet highly effective power conditioning unit is ideal for use with entry- to mid-level audio and AV systems, and is rated at 2300W (230 volts), 1100W (110 volts).

Specifications

Number of outlets: 6
 Type of outlets: UK, EU, US
 Standard mains inlet: IEC fused

Mains voltage: 100-240VAC/50-60Hz
 Maximum current: 10Amps HRC
 Total wattage: 2300 (UK/EU) 1100 (US)
 Dimensions: 444x85x305mm (WxHxD)
 Weight: 5Kg

- Easy 'plug-n-play' set-up
- Suitable for a complete system
- Component from component isolation
- Upgradable design
- Compact yet elegant rack width unit
- UK, EU and US specifications available





Orion

The Orion has been designed for use with simple audio systems featuring minimal components – for example, a CD player and integrated amplifier, or a high-end CD source fed direct to a power amplifier. As an audio system grows, more Orion units can be specified to raise the performance of the system as a whole. However, it is also possible to specify the unit as a four, six or eight-way strip. In this configuration, the unit has two high-current outlets and two, four or six medium-current outlets, as opposed to one high-current outlet (for amps) and one medium-current outlet (for source components) in the standard two-socket version.

Orion is based upon the technological breakthroughs first seen in the multi-award-winning Gil Mini Sub full system power conditioner. Its sophisticated circuitry uses complex multiple shunt, series and delta

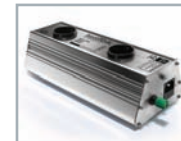
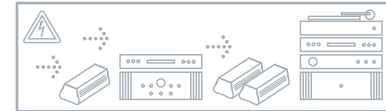
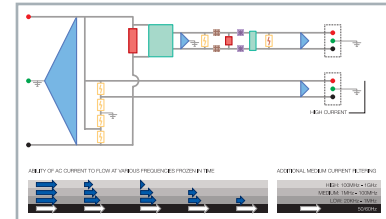
filter networks, coupled with proprietary Gating© principles and Polaris-X© technology. These features eliminate component cross-contamination, an essential part of high-performance power conditioning.

Specifications

Number of outlets: 2, 4, 6 or 8
 Type of outlets: UK, EU, US
 Standard mains inlet: IEC fused

Mains voltage: 100-240VAC/50-60Hz
 Maximum current: (outlet 1) .10Amps HRC
 Maximum current: (outlet 2)3.15Amps
 Total wattage: (1) .2300 (UK/EU) 1100 (US)
 Total wattage: (2) . . .700 (UK/EU) 340 (US)
 Dimensions:
 .120 x 80 x 265/410/555/700mm (WxHxD)
 Weight:3.75Kg

- Easy 'plug-n-play' set-up
- Suitable for all systems
- Component from component isolation
- 2 high-quality individually filtered outlets
- Compact and elegant system
- Wall bracket mounting options available
- UK, EU and US specifications available



"Excellent value for money... A great real-world product that is useful and inexpensively upgrades your system"

HI-FI WORLD



Sirius

The Sirius is IsoTek's® new entry-level power strip, replacing the highly acclaimed Gemini. Designed to deliver an affordable, high-quality, one-stop mains conditioning solution for audio and AV set-ups, Sirius features six high-quality unswitched outlets to power a complete system from a single wall socket.

Sirius is part of IsoTek's® latest EVO3 product range, and as such boasts a number of sophisticated filtering technologies. Specially developed for Sirius and unique to IsoTek®, Inductive Resistance Gate© optimises the isolation between each of the six outlets without compromising transient power ability. Also new is K.E.R.P.© (Kirchoff's Equal Resistance Path), a technology developed from IsoTek's® high-end Titan and Nova mains conditioning units to ensure optimum power sharing from one socket to the next. At its price, Sirius is unrivalled in its ability to ensure that the power supplied to every system component is free from the kind of

mains-borne interference that significantly erodes the performance of all hi-fi and home cinema equipment.

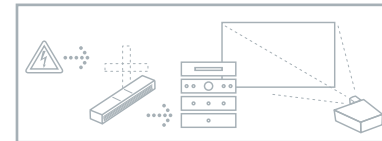
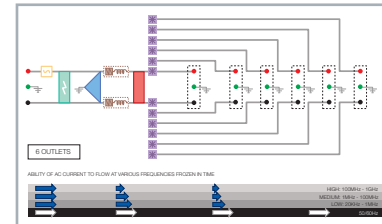
With its rugged aluminium case, the six-way Sirius is built to last. And, thanks to class-leading protection circuitry, including 22,500 amps of instantaneous current absorption, it will ensure your audio equipment lasts, too.

Specifications

Number of outlets: 6
 Type of outlets: UK, EU, US
 Standard mains inlet: IEC fused

Mains voltage: 100-240VAC/50-60Hz
 Maximum current: 10Amps HRC
 Total wattage: 2300 (UK/EU) 1100 (US)
 Dimensions: 88 x 50 x 480mm (WxHxD)
 Weight: 2.0Kg

- Easy 'plug-n-play' set-up
- Suitable for a complete system
- Component from component isolation
- Inductive Resistance Gate & K.E.R.P. technology
- Wall mounting brackets included
- 22,500Amps of instantaneous protection
- UK, EU and US specifications available





“The Mira’s effect was immediately noticeable on all displays... The IsoTek Mira should be auditioned by anyone interested in achieving the very best picture and sound quality”

AV REVIEW

“The IsoTek Mira improves the performance of all video displays, from LCD and Plasma screens to traditional CRT sets and video projectors.”

T3 MAGAZINE



Mira

IsoTek's new Mira has been developed specifically for traditional CRT televisions, LCD, Plasma and projectors. It not only cleans the power supply, improving picture and sound quality, but also offers unrivalled protection. Unique surge protection circuits and a 'triple resonant system' stop 'in-rush' currents, which not only damage but reduce a component's life.

The Mira can be used on a full-blown home cinema system or with less sophisticated LCD, plasma, CRT TVs and projectors. The advanced circuitry in Mira delivers immediate and significant improvements to the on-screen performance – crisper and more stable images, deeper blacks and more vibrant, natural colours. Picture quality isn't the only thing that Mira improves. Plug in a DVD player or set-top box, and sound is brought into focus, improving definition and detail.

Mira also significantly reduces 'in-rush' current a know cause to reduce component

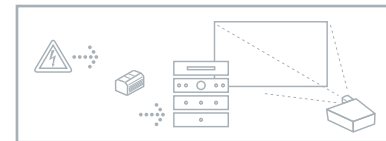
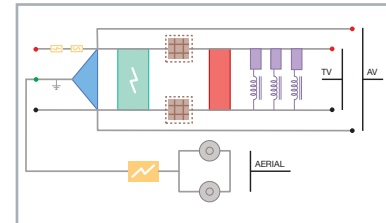
life. High quality protection circuitry also removes dangerous voltages spikes and power surges. Advanced arial protection also safeguards components in storm conditions.

Specifications

Number of outlets:2 + Aerial
 Type of outlets:UK, EU, US
 Standard mains inlet:IEC fused

Mains voltage:110-240VAC/50-60Hz
 Maximum current:10Amps
 Total wattage:2300 (UK/EU) 1100 (US)
 Visual outlet:550W (1100W at 230V)
 Component Outlet: 550W (1100W at 230V)
 Dimensions:
90 x 82 x 150mm (WxHxL)
 Weight:900g

- Improves picture quality
- Stops 'in-rush' current extending component life.
- 22,500A of instantaneous protection
- Eliminates RFI and EMI
- Aerial protection safeguard components in storm conditions





IsoTek® Extreme High-fidelity & High-current Mains Cable

Extreme provides a high-quality, low-capacitance, shielded link between the wall outlet and a 20amp source. Extreme is a triple-shielded OFC cable with 2.5mm conductors, rated at a true 20amps and terminated with IsoTek's high-performance IEC C19 24ct gold IEC connector and either Furutech® UK three-pin plug, IsoTek 24ct gold Shuko or IsoTek 24ct gold American 3-pin. A stunning power cord for very high-current applications.

IsoTek Syncro Mains Cable

A unique high-quality triple-shielded OFC cable with 2.5mm conductors, rated at 20amps and features high-performance IsoTek® 24ct gold connectors. Syncro features proprietary DC blocking technology, which synchronises the mains sine wave on the zero volts point. Sine wave off set has been linked to a problem commonly referred to as "DC on the mains" which causes transformers in power amps to buzz. Rated at 16amps Syncro can be used independently or to power all other IsoTek products. Termination options available



IsoTek Optimum High-current Mains Cable

The Optimum is a triple-shielded OFC cable with 2.5mm conductors, rated at 20amps and includes IsoTek's® high-performance 24ct gold connectors (EU & US).

This cable can be used with all IsoTek product which features a standard IEC mains inlet, or independently for other high current devices, for example power amps.



Power Cables

IsoTek Elite High-grade Mains Cable

Elite is a double-shielded OFC cable with 1.5mm conductors, rated at 16amps. Along with the RFI and EMI blocking screen the cable also includes a high-performance IsoTek® 24ct gold IEC connector for low resistance and maximum current delivery.

This is an ideal cable for source components, for example CD, DAC, DVD or preamps etc.



IsoTek Premium Mains Cable

The Premium is a double-shielded OFC audio grade power cord featuring an active RFI and EMI blocking screen. The cable has 1.5mm conductors and is rated at 16amps.

“RFI/EMI shielding and high-quality connectors, the Premium cable gives all Hi-Fi a welcome performance boost”

HI-FI CHOICE



IsoTek Premier Mains Cable

The Premier is a double-shielded OFC audio grade power cord featuring an active RFI and EMI blocking screen. The cable has 1.5mm conductors and is rated at 16amps.

Premier features the a C7 connector commonly referred to as ‘figure 8’.





IsoPlug

The IsoPlug forms the first line of defence against mains noise – simply plug the device in any spare wall sockets and switch the socket on. Its design builds upon the industry standard of a delta filter configuration across the three poles of the mains, delivering highly effective results when plugged next to noisy appliances like fridges, computers and so on. IsoPlug also features over-voltage protection.

NeoPlug

The NeoPlug is the next step on from the IsoPlug, developed as an intellectual exercise to overcome capacitor inductance and produce a device that works consistently at optimum levels and reacts quickly to transient noise. The NeoPlug has an additional circuit to the IsoPlug, which reacts at lightning fast speed – critical for the effective removal of high frequency mains noise.

“IsoTek’s NeoPlug is a superb little gadget that helps eliminate infuriating mains-borne noise from your system. Every music lover should have one”

HI-FI CHOICE

“No Hi-Fi system should be without some kind of mains improver and this one’s a gem”

HI-FI CHOICE, ISOPLUG



Accessories

IsoTek® 24ct Gold Connectors

IsoTek can now supply three types of high-quality, audiophile-grade power connectors: European Shuko, American three-pin and the universal IEC used on most electrical appliances.

Each connector has been manufactured with quality in mind and therefore features parts of the highest calibre; all connection surfaces are manufactured from pure copper, which is then plated in 24ct gold and deep cryogenically treated. The fully detachable main body uses high-quality injection-moulded polycarbonate with an injection-moulded nylon front assembly.

All connectors accept cables with an overall external diameter of 6.5-16mm and conductors up to 6 AWG (4.1mm). The rear clamping mechanism also ensures the utmost safety and reliability.

“These clever connectors extract every last ounce of performance”

HI-FI CHOICE



IsoTek® Full System Enhancer

The Full System Enhancer CD is an intensive ‘workout’ for your audio system. The disc includes specially developed signals to help ‘run-in’ new equipment, as well as demagnetising existing hi-fi components and rejuvenating your entire system.

It is important to exercise an audio system across the full range of frequencies and amplitudes it may encounter in real life, and to this end the tones on this disc have been devised to cover the complete audio band from top to bottom, also ensuring that, for instance, high-amplitude signals are combined with high-speed ones.

In electronic terms, the required signals feature lots of high-speed activity coupled to some high-amplitude excursions. All of these signals have been produced according to strict mathematical criteria, so as to place the greatest stress on the important parts of a system – without, it is important to note, endangering any part of it.

“This could well be the most cost-effective audiophile tweak in existence”

6MOONS.COM



Product Matrix

	General Specification						Filter Network				Advanced Technology							Finishes				
	Rack Width	Power Strip	No. Outlets	Standard Fusing	Electronic Fusing	Standard Feet	RDC Feet	Shunt Filter	Series Filter	Delta Filter	Protection Filter	Polaris-X	C.F.C.C.C.*	Gating System	Adaptive Gating	Direct Coupled	Multiple Delta	K.E.R.P.	Triple Resonant Tech.	Black Option	Silver Option	Blue LED
Titan	✓		2		✓		✓	✓		✓		✓	✓			✓				✓	✓	✓
Titan Multi-Link		✓	6			✓		✓			✓	✓	✓							✓	✓	✓
Nova	✓		6		✓		✓	✓		✓		✓	✓		✓		✓			✓	✓	✓
Sigmas	✓		6		✓	✓		✓	✓	✓	✓	✓	✓		✓	✓	✓			✓	✓	✓
Aquarius	✓		6	✓	✓	✓		✓	✓	✓	✓	✓	✓		✓	✓	✓	✓		✓	✓	✓
Vision	✓		6	✓		✓		✓	✓	✓	✓	✓	✓	✓						✓	✓	✓
Solus	✓		6	✓		✓				✓	✓	✓								✓	✓	✓
Orion		✓	2-8	✓		✓		✓	✓	✓	✓	✓	✓	✓							✓	✓
Sirius		✓	6	✓		✓		✓		✓	✓	✓	✓					✓		✓	✓	✓
Mira		✓	2	✓		✓		✓		✓	✓	✓							✓	✓	✓	✓

*Prevents, Component From Component Cross Contamination

Information quoted in this catalogue is correct at the time of print. However, owing to our ongoing research and development programmes, improvements and small specification changes may result.

Guide To Symbols



Shunt Filter

This represents the simplest form of filter, placed between the live and neutral poles of the mains supply.



Series Filter

A type of inductor, which is placed 'in-line' rather than between live and neutral like a shunt filter. This component is a very specialised design, as it requires minimal loss at mains frequency. IsoTek® has found that 'off the shelf' series filters are unable to offer sufficient bandwidth and flexibility; therefore, we design and produce our own to British Aerospace specification.



Delta Filter

A sophisticated type of shunt filter that is connected across the three poles of the mains supply. The delta filter is often described as a practical solution for the worst effects of mains noise. It could be said that a delta filter is three different types of shunt filter in one.



Multi Layer Delta Filter

For the ideal delta filter, you would use the perfect capacitor. However, the perfect delta arrangement for capacitors does not exist, as all capacitors suffer from some inductance. Multi-layer delta filters work something like a loudspeaker crossover unit, one section dealing with low frequencies (20KHz – 1MHz), the next medium and the final high radio frequencies.



Protection Filter

The protection circuitry in IsoTek® products will be understood by most people to offer valuable protection to their hi-fi and home theatre equipment from potential damage owing to transient mains over-voltage. In fact, IsoTek® protection circuits deliver two-fold operation, with additional filtering helping the shunt filters deal with high-energy overload as well as component protection. Unlike less sophisticated solutions, this is achieved without destroying musical enjoyment.



Polaris-X

This proprietary network helps to ensure that the electrons take the easiest route, thus reducing crosstalk and improving component-from-component isolation. The analogy would be that water does not run upstream. The Polaris-X principle is based upon Kirchhoff's two current laws..



Gating

The Gating principles in IsoTek® circuits force balance between the various outputs, thus allowing for an optimum filtering environment.



Adaptive Gating

Adaptive Gating automatically senses the requirements of the load in a similar manner to the iris of an eye adjusting to light. This system offers a universal system for both high-current and low-current devices, thus delivering the ultimate, continually fluid filtering environment.

Your local dealer / distributor is:

email: info@isoteksystems.com
www.isoteksystems.com